

JT300

Технические характеристики

По вопросам продаж и поддержки обращайтесь:

Алматы (7273)495-231
Ангарск (3955)60-70-56
Архангельск (8182)63-90-72
Астрахань (8512)99-46-04
Барнаул (3852)73-04-60
Белгород (4722)40-23-64
Благовещенск (4162)22-76-07
Брянск (4832)59-03-52
Владивосток (423)249-28-31
Владикавказ (8672)28-90-48
Владимир (4922)49-43-18
Волгоград (844)278-03-48
Вологда (8172)26-41-59
Воронеж (473)204-51-73
Екатеринбург (343)384-55-89
Иваново (4932)77-34-06
Ижевск (3412)26-03-58
Иркутск (395)279-98-46
Казань (843)206-01-48

Калининград (4012)72-03-81
Калуга (4842)92-23-67
Кемерово (3842)65-04-62
Киров (8332)68-02-04
Коломна (4966)23-41-49
Кострома (4942)77-07-48
Краснодар (861)203-40-90
Красноярск (391)204-63-61
Курск (4712)77-13-04
Липецк (4742)52-20-81
Магнитогорск (3519)55-03-13
Москва (495)268-04-70
Мурманск (8152)59-64-93
Набережные Челны (8552)20-53-41
Нижний Новгород (831)429-08-12
Новокузнецк (3843)20-46-81
Ноябрьск (3496)41-32-12
Новосибирск (383)227-86-73

Омск (3812)21-46-40
Орел (4862)44-53-42
Оренбург (3532)37-68-04
Пенза (8412)22-31-16
Петрозаводск (8142)55-98-37
Псков (8112)59-10-37
Пермь (342)205-81-47
Ростов-на-Дону (863)308-18-15
Рязань (4912)46-61-64
Самара (846)206-03-16
Саранск (8342)22-96-24
Санкт-Петербург (812)309-46-40
Саратов (845)249-38-78
Севастополь (8692)22-31-93
Симферополь (3652)67-13-56
Смоленск (4812)29-41-54
Сочи (862)225-72-31
Ставрополь (8652)20-65-13
Сургут (3462)77-98-35

Сыктывкар (8212)25-95-17
Тамбов (4752)50-40-97
Тверь (4822)63-31-35
Тольятти (8482)63-91-07
Томск (3822)98-41-53
Тула (4872)33-79-87
Тюмень (3452)66-21-18
Ульяновск (8422)24-23-59
Улан-Удэ (3012)59-97-51
Уфа (347)229-48-12
Хабаровск (4212)92-98-04
Чебоксары (8352)28-53-07
Челябинск (351)202-03-61
Череповец (8202)49-02-64
Чита (3022)38-34-83
Якутск (4112)23-90-97
Ярославль (4852)69-52-93

Россия +7(495)268-04-70

Киргизия +996(312)-96-26-47

Казахстан +7(7172)727-132

JT300 Series Economic Inverter

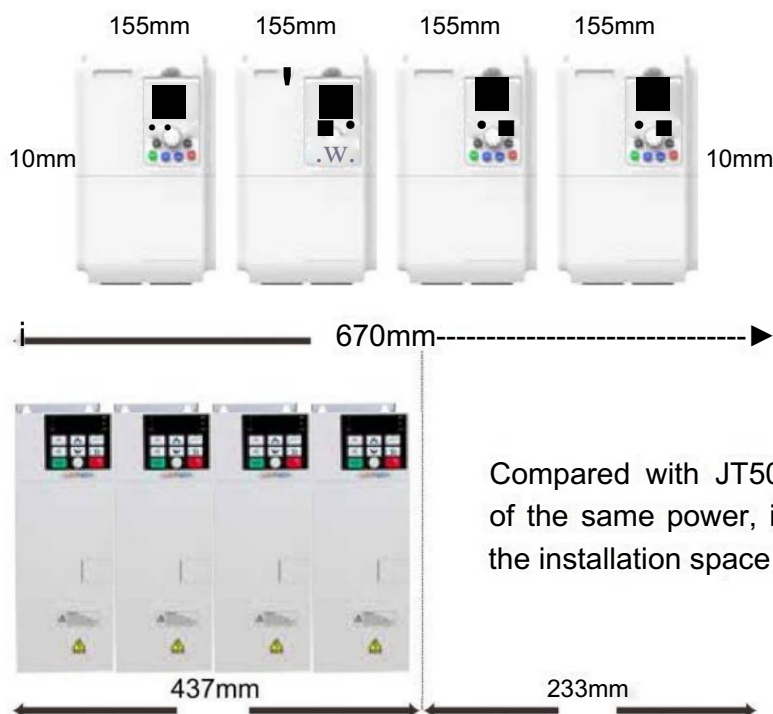


JT300 adopts a slim book-style body design, a brand-new structural layout, the volume is reduced by 50%, and the power distribution cost is saved by 50%. Its independent air duct which is directly connected up and down can achieve efficient heat dissipation. JT300 can be installed side by side to make full use of the space and greatly reduce the cost of the electric cabinet; its excellent control algorithm, rich hardware interfaces and software functions can realize all-round protection and improve product reliability.

Structural features

■ Smart and compact

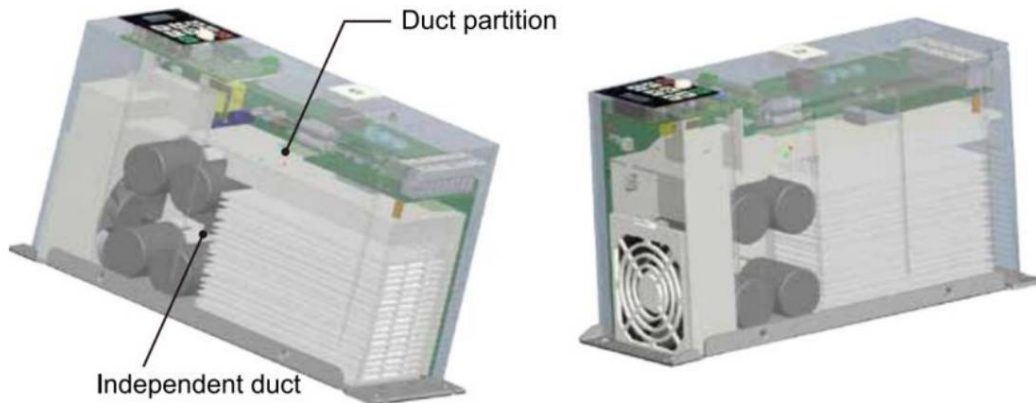
Compact structure, supporting side-by-side installation, saving installation space and reducing the cost of the cabinet



•Protection Design

High protection: completely independent air duct, scientific layout inside the inverter, considering heat dissipation of high power consumption devices and dust-proof for sensitive devices

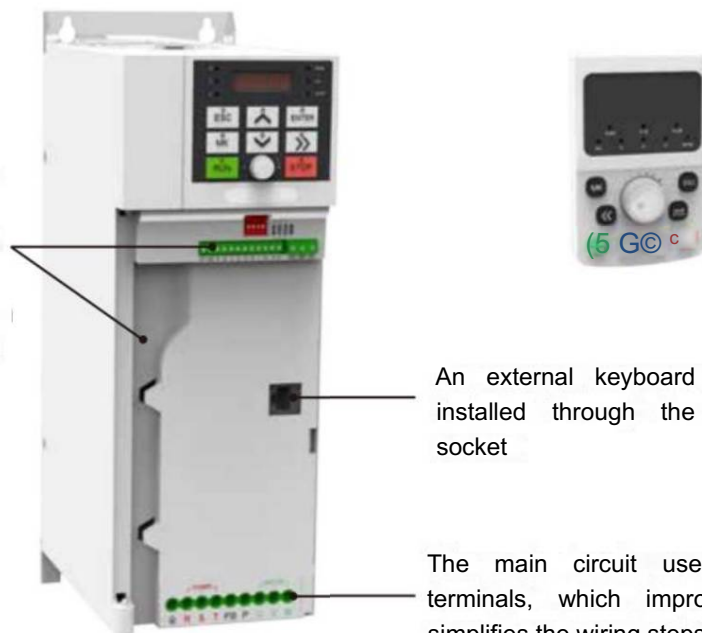
High temperature resistance: scientific air duct design can quickly dissipate heat. With the low-temperature rise, JT300 can work without derating at an ambient temperature of 50°C.



* Rich interface

JT300 series is equipped with 485 communication as standard; 4 multifunctional digital input terminals; relay output & input, analog output & input; supporting both voltage and current type; simple terminal layout and crafted overall style

The wiring trough for the control wire is designed on the side of the control terminal to ensure the beauty of the wiring when used in a cabinet or as a single inverter



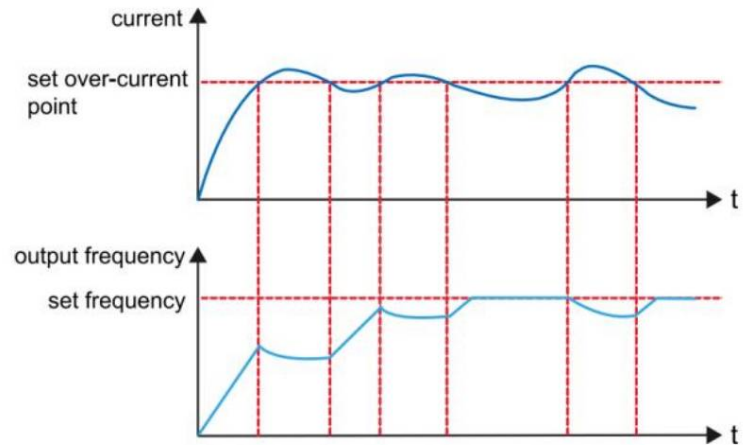
An external keyboard can be installed through the network socket

The main circuit uses European-style terminals, which improves safety and simplifies the wiring steps

Features

■ Comprehensive and reliable software and hardware protection

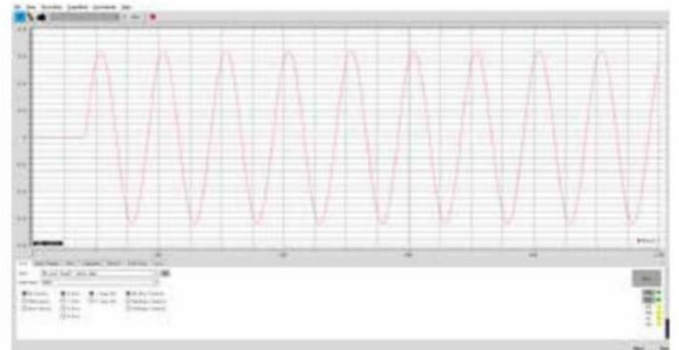
Accurate and comprehensive software and hardware protection ensure stable and reliable operation of the system, and accurate fault information output can locate and solve problems more quickly.



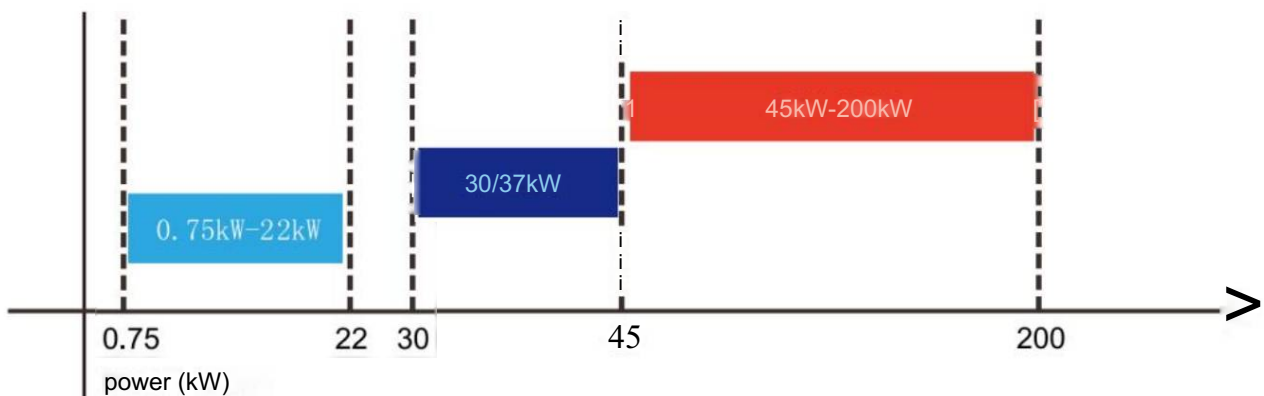
The inverter will automatically adjust the operating frequency if the set protection current value is exceeded

• virtual oscilloscope

With the virtual oscilloscope software which can monitor four parameters at the same time, users can monitor the operating parameters on the computer through it, making monitoring, debugging, and troubleshooting more flexible.

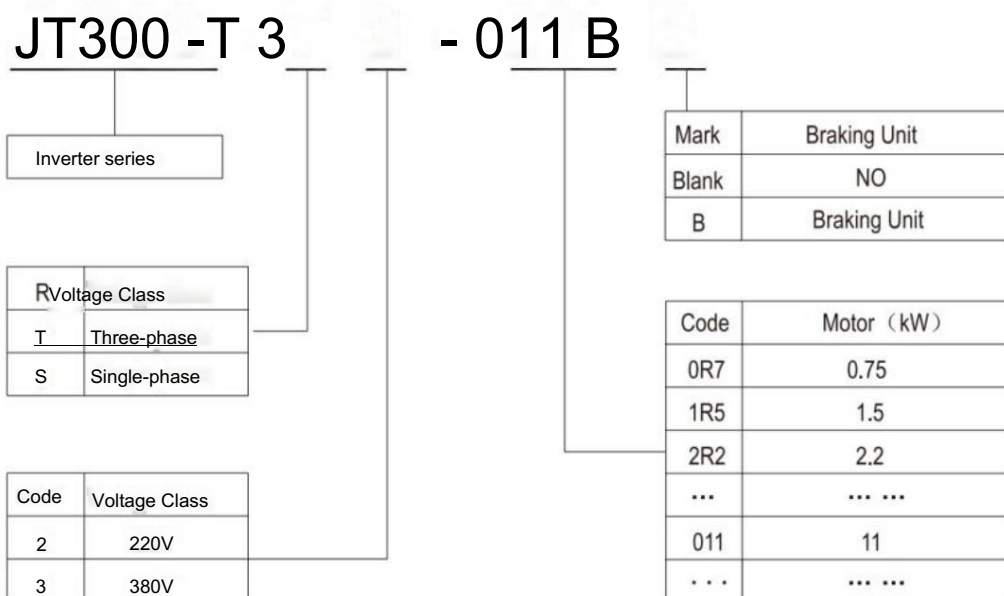


• Brake unit



- 0.75kW-22kW Standard brake unit
- 30/37kW Optional built-in brake unit
- 45kW and above External braking unit

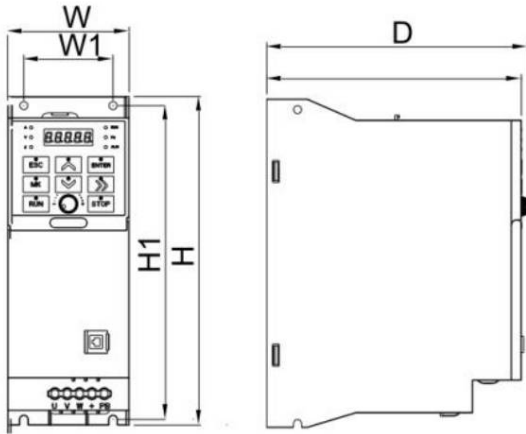
Model Description



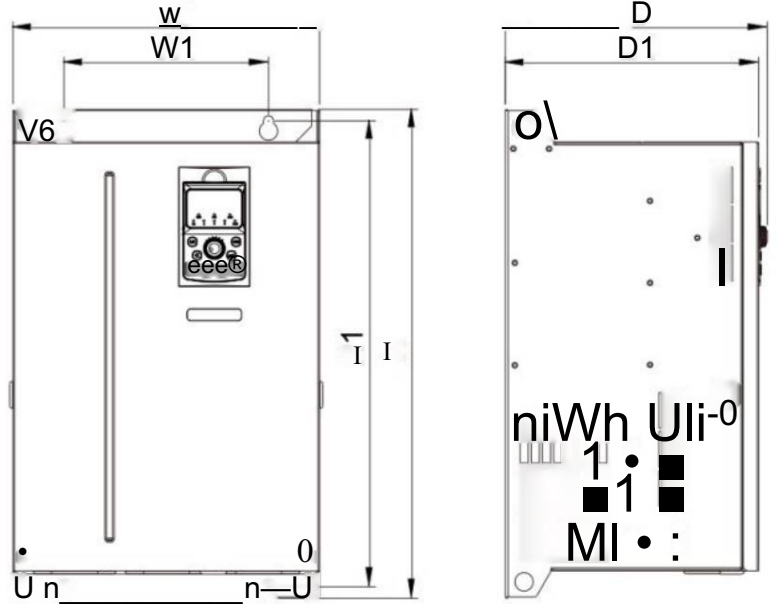
Technical parameters

Product Model	Power Capacity kVA	Input Current A	Output Current A	Motor kW
Single-phase: 220V, 50/60Hz				
JT300-S2-0R7	2.0	8.2	5.0	0.75
JT 300-S2-1R5	2.8	14	7.0	1.5
Three-phase: 380V, 50/60Hz				
JT 300-T3-0R7B	2.2	3.4	2.7	0.75
JT 300-T3-1R5B	3.2	5	4.0	1.5
JT 300-T3-2R2B	4.0	5.8	5.0	2.2
JT 300-T3-3R7B	6.8	10.5	8.5	3.7
JT 300-T3-5R5B	10	14.6	12.5	5.5
JT 300-T3-7R5B	14	20.5	17	7.5
JT 300-T3-011B	17	26	25	11
JT 300-T3-015B	21	35	32	15
JT 300-T3-018B	24	38.5	37	18.5
JT 300-T3-022B	30	46.5	45	22
JT 300-T3-030	40	62	60	30
JT 300-T3-037	57	76	75	37
JT 300-T3-045	69	92	91	45
JT 300-T3-055	85	113	112	55
JT 300-T3-075	114	157	150	75
JT 300-T3-090	134	180	176	90
JT 300-T3-110	160	214	210	110
JT 300-T3-132	192	256	253	132
JT 300-T3-160	231	307	304	160
JT 300-T3-200	250	385	377	200

Appearance and Dimensions



Installation Dimensions of Plastic Case Inverter



Installation Dimensions of Metal Case Inverter

Model	Dimensions(mm)		Mounting Holes Position(mm)				Diameter of Mounting Holes
	W1	H1	H	W	D1	D	
JT300-S2-0R7	81	139	150	90	116	120	Ø4.5
JT300-S2-1R5							
JT300-T3-0R7B	45	173	182	70	148	152	Ø5
JT300-T3-1R5B							
JT300-T3-2R2B							
JT300-T3-3R7B	55	193	202	75	157	161	Ø5
JT300-T3-5R5B							
JT300-T3-7R5B	80	308	322	108	176	180	Ø5
JT300-T3-011B							
JT300-T3-015B	190	273.5	291.5	197	175	182	Ø6
JT300-T3-018B							
JT300-T3-022B							
JT300-T3-030	220	392	405	253	180	187	Ø7
JT300-T3-037							
JT300-T3-045	200	455	475	300	248	255	Ø10
JT300-T3-055	256	473	492	300	248	255	Ø10
JT300-T3-075	286	473	492	335	248	225	Ø10
JT300-T3-090	260	590	610	410	270	279	Ø10
JT300-T3-110	320	690	720	455	325	334	Ø12
JT300-T3-132							
JT300-T3-160							
JT300-T3-200	360	845	880	530	367	376	Ø14

По вопросам продаж и поддержки обращайтесь:

Алматы (7273)495-231	Калининград (4012)72-03-81	Омск (3812)21-46-40	Сыктывкар (8212)25-95-17
Ангарск (3955)60-70-56	Калуга (4842)92-23-67	Орел (4862)44-53-42	Тамбов (4752)50-40-97
Архангельск (8182)63-90-72	Кемерово (3842)65-04-62	Оренбург (3532)37-68-04	Тверь (4822)63-31-35
Астрахань (8512)99-46-04	Киров (8332)68-02-04	Пенза (8412)22-31-16	Тольятти (8482)63-91-07
Барнаул (3852)73-04-60	Коломна (4966)23-41-49	Петрозаводск (8142)55-98-37	Томск (3822)98-41-53
Белгород (4722)40-23-64	Кострома (4942)77-07-48	Псков (8112)59-10-37	Тула (4872)33-79-87
Благовещенск (4162)22-76-07	Краснодар (861)203-40-90	Пермь (342)205-81-47	Тюмень (3452)66-21-18
Брянск (4832)59-03-52	Красноярск (391)204-63-61	Ростов-на-Дону (863)308-18-15	Ульяновск (8422)24-23-59
Владивосток (423)249-28-31	Курск (4712)77-13-04	Рязань (4912)46-61-64	Улан-Удэ (3012)59-97-51
Владикавказ (8672)28-90-48	Курган (3522)50-90-47	Самара (846)206-03-16	Уфа (347)229-48-12
Владимир (4922)49-43-18	Липецк (4742)52-20-81	Саранск (8342)22-96-24	Хабаровск (4212)92-98-04
Волгоград (844)278-03-48	Магнитогорск (3519)55-03-13	Санкт-Петербург (812)309-46-40	Чебоксары (8352)28-53-07
Вологда (8172)26-41-59	Москва (495)268-04-70	Саратов (845)249-38-78	Челябинск (351)202-03-61
Воронеж (473)204-51-73	Мурманск (8152)59-64-93	Севастополь (8692)22-31-93	Череповец (8202)49-02-64
Екатеринбург (343)384-55-89	Набережные Челны (8552)20-53-41	Симферополь (3652)67-13-56	Чита (3022)38-34-83
Иваново (4932)77-34-06	Нижний Новгород (831)429-08-12	Смоленск (4812)29-41-54	Якутск (4112)23-90-97
Ижевск (3412)26-03-58	Новокузнецк (3843)20-46-81	Сочи (862)225-72-31	Ярославль (4852)69-52-93
Иркутск (395)279-98-46	Ноябрьск (3496)41-32-12	Ставрополь (8652)20-65-13	
Казань (843)206-01-48	Новосибирск (383)227-86-73	Сургут (3462)77-98-35	
Россия +7(495)268-04-70	Киргизия +996(312)-96-26-47	Казахстан +7(7172)727-132	